

P80

Model	STD €	PACKING €
P80 LT	3.095,00	32,00

The cost of packing has to be intended net.

Available accessories	PRICE €	
Mechanical rotation of the basket	895,00	ACP001
Integrated oil separator *①	429,00	ACP002

*① Compulsory mechanical rotation of the basket

Features and standard equipments

LT (for washing up to 60 °C)

- ✓ Zinc-plated basket in electrowelded wire with outer rim
- ✓ Cast iron electropump with Viton seals
- ✓ Stainless steel filter on pump suction
- ✓ Safety limit switch on cover opening
- ✓ Plastic electrical cabinet
- ✓ Brass fittings with brass and Teflon ogive
- ✓ Electrical heating by means of stainless steel/incoloy heating element
- ✓ Structure and sheets made of stainless steel Aisi 304
- ✓ Copper piping with brass nozzles alternatively offset



P80

LAVAPEN

Model	STD €	PACKING €
LP1 P	2.298,00	20,00
LP1 C LT	2.511,00	20,00
LP2 P	2.727,00	22,00
LP2 C LT	3.014,00	22,00
LP3 P	3.231,00	31,00
LP3 C LT	3.517,00	31,00
LP4 P	4.950,00	64,00
LP4 C LT	5.371,00	64,00

The cost of packing has to be intended net.

LP1 P



LP1 C



Available accessories	PRICE €	
Electrical steam exhaustion (for electrical models)	618,00	ACL001
Pneumatic steam exhaustion (for pneumatic models)	1.397,00	ACL002
Pressure washing gun, in addition to the brush	300,00	ACL005
Door closing with PVC hoses (electrical mod. for hot wash)	408,00	ACL003
Door closing with EKASTU® hoses resistant to oil derivated product (for pneumatic models)	525,00	ACL004

Features and standard equipments

- ✓ Removable panels in stainless steel, that divide the washing chamber from the tank
- ✓ Washing brush in pressure
- ✓ Compressed air blowing gun
- ✓ Frontal sliding hardened glass with upper block
- ✓ Structure and sheets made of stainless steel Aisi 304

C (electrical) LT (for washing up to 60 °C)

- ✓ Electrical pump with stainless steel filter on pump suction
- ✓ Heating element in stainless steel Incoloy
- ✓ Inside tank under the washing zone

P (pneumatic for cold washing)

- ✓ Pneumatic vertical pump installed directly on the tank
- ✓ Outer PVC tank installed under the tub

SIMPLEX (60, 80) **DGT**

Model	STD €	INOX €	PACKING €
Simplex 60 M LT	3.359,00	3.584,00	23,00
Simplex 60 M HT	5.767,00	5.992,00	23,00
Simplex 60 LT	3.551,00	3.776,00	23,00
Simplex 60 HT	5.958,00	6.183,00	23,00
Simplex 80 LT	4.247,00	4.753,00	32,00
Simplex 80 LT AP	5.955,00	6.461,00	32,00
Simplex 80 HT	6.891,00	7.397,00	32,00
Simplex 80 HT AP	8.599,00	9.104,00	32,00

The cost of packing has to be intended net.

Simplex 80 **LT INOX**



Available accessories	PRICE €	
Exhaustion of steams (patented system) ☀	932,00	ACS001
Level control by electrovalve for automatic water charging	341,00	ACS002
Disc oil separator	429,00	ACS003
Teflon and Viton gaskets (tub border excluded)	218,00	ACS004
Panels under the basket with filters to collect grease	273,00	ACS005
Equipped to be used with abrasive contaminants	286,00	ACS006
Equipped to be used with strong caustic chemical products *①	660,00	ACS007
Bleaching of the inside weldings ☀	400,00	ACS010
Blowing with compressed air and independent pipings *②	1.458,00	ACS008

*① Only for **INOX** stainless steel version

*② Compulsory exhaustion and panels under the basket

Features and standard equipments

- ✓ Stainless steel electropump with Viton seals
- ✓ Stainless steel filter on pump suction
- ✓ Gasket on cover made of NBR
- ✓ Electrical heating by means of stainless steel/incoloy heating element
- ✓ Mechanical rotation of the basket
- ✓ **Digital electronic control and power system (DGT)** ☀
- ✓ Structure and sheets made of stainless steel Aisi 304

AP

- ✓ High pressure pump

LT (for washing up to 60 °C)

- ✓ Zinc-plated basket in electrowelded wire with outer rim
- ✓ Zinc-plated front click closing
- ✓ Safety limit switch on cover opening
- ✓ Gear motor for basket rotation with zinc-plated shaft.
- ✓ Brass fittings with brass and Teflon ogive
- ✓ Copper piping with brass nozzles alternatively offset

HT (for washing over 60 °C)

- ✓ Timed electrical exhaustion of steams
- ✓ Zinc-plated basket in electrowelded wire with outer rim
- ✓ Zinc-plated front click closing
- ✓ Total thermal insulation of polyurethane with panels made of stainless steel that can be dismantled
- ✓ Safety limit switch with blockage of the cover opening during the cycle
- ✓ Gearmotor for basket rotation with zinc-plated shaft
- ✓ Panels under the basket with filters to collect grease and chips
- ✓ Brass fittings with brass and Teflon ogive
- ✓ Copper piping and nozzles alternatively offset

LT (for washing up to 60 °C) INOX

- ✓ Stainless steel basket with outer rim in electrowelded wire
- ✓ Stainless steel front click closing
- ✓ Safety limit switch on cover opening
- ✓ Gear motor for basket rotation with stainless steel shaft
- ✓ Stainless steel fittings
- ✓ Stainless steel piping with stainless steel nozzles alternatively offset

HT (for washing over 60 °C) INOX

- ✓ Timed electrical exhaustion of steams
- ✓ Stainless steel basket in electrowelded wire with outer rim
- ✓ Stainless steel front click closing
- ✓ Total thermal insulation of polyurethane with panels made of stainless steel that can be dismantled
- ✓ Safety limit switch with blockage of the cover opening during the cycle
- ✓ Gearmotor for basket rotation with stainless steel shaft
- ✓ Panels under the basket with filters to collect grease and chips
- ✓ Stainless steel fittings
- ✓ Stainless steel piping with stainless steel nozzles alternatively offset

SIMPLEX (100, 120) **DGT**

Model	STD €	INOX €	PACKING €
Simplex 100 LT	6.954,00	7.617,00	54,00
Simplex 100 LT AP	8.899,00	9.562,00	54,00
Simplex 100 HT	9.048,00	9.712,00	54,00
Simplex 100 HT AP	10.993,00	11.656,00	54,00
Simplex 120 LT	9.325,00	10.055,00	65,00
Simplex 120 LT AP	11.594,00	12.325,00	65,00
Simplex 120 HT	11.644,00	12.374,00	65,00
Simplex 120 HT AP	13.919,00	14.644,00	65,00

The cost of packing has to be intended net.



Simplex 100 LT

Available accessories	PRICE €	
Outer carriage *①	1.854,00	ACS009
Additional outer carriage (besides the first)	1.450,00	ACS011
Additional basket for outer carriage (besides the first)	850,00	ACS012
Level control by electrovalve for automatic water charging	341,00	ACS002
Disc oil separator	688,00	ACS003
Teflon and Viton gaskets (tub border excluded)	218,00	ACS004
Panels under the basket with filters to collect grease	273,00	ACS005
Equipped to be used with abrasive contaminants	286,00	ACS006
Equipped to be used with strong caustic chemical products *③	660,00	ACS007
Bleaching of the inside weldings	550,00	ACS010
Blowing with compressed air and independent pipings *②	1.458,00	ACS008

*① Washing height reduced of mm. 120, only for **INOX** stainless steel version

*② Compulsory panels under the basket

*③ Only for **INOX** stainless steel version

Steam exhaustion now is standard for all Simplex 100 and Simplex 120 models!!



In compliance with the standards UNI EN 12921-2:2005 § 5.6.2.2

Features and standard equipments

- ✓ Timed electrical exhaustion of steams (patented system)
- ✓ Stainless steel electropump with Viton seals
- ✓ Stainless steel fillter on pump suction
- ✓ Gasket on cover made of NBR
- ✓ Electrical heating by means of stainless steel/incoloy heating element
- ✓ Mechanical rotation of the basket
- ✓ Digital electronic control and power system (**DGT**)
- ✓ Structure and sheets made of stainless steel Aisi 304

AP

- ✓ High pressure pump

LT (for washing up to 60 °C)

- ✓ Zinc-plated basket in electrowelded wire with outer rim
- ✓ Zinc-plated front click closing
- ✓ Safety limit switch on cover opening
- ✓ Gear motor for basket rotation with zinc-plated shaft.
- ✓ Brass fittings with brass and Teflon ogive
- ✓ Copper piping with brass nozzles alternatively offset

HT (for washing over 60 °C)

- ✓ Timed electrical exhaustion of steams
- ✓ Zinc-plated basket in electrowelded wire with outer rim
- ✓ Zinc-plated front click closing
- ✓ Total thermal insulation of polyurethane with panels made of stainless steel that can be dismantled
- ✓ Safety limit switch with blockage of the cover opening during the cycle
- ✓ Gearmotor for basket rotation with zinc-plated shaft
- ✓ Panels under the basket with filters to collect grease and chips
- ✓ Brass fittings with brass and Teflon ogive
- ✓ Copper piping and nozzles alternatively offset

LT (for washing up to 60 °C) INOX

- ✓ Stainless steel basket with outer rim in electrowelded wire
- ✓ Stainless steel front click closing
- ✓ Safety limit switch on cover opening
- ✓ Gear motor for basket rotation with stainless steel shaft
- ✓ Stainless steel fittings
- ✓ Stainless steel piping with stainless steel nozzles alternatively offset

HT (for washing over 60 °C) INOX

- ✓ Timed electrical exhaustion of steams
- ✓ Stainless steel basket in electrowelded wire with outer rim
- ✓ Stainless steel front click closing
- ✓ Total thermal insulation of polyurethane with panels made of stainless steel that can be dismantled
- ✓ Safety limit switch with blockage of the cover opening during the cycle
- ✓ Gearmotor for basket rotation with stainless steel shaft
- ✓ Panels under the basket with filters to collect grease and chips
- ✓ Stainless steel fittings
- ✓ Stainless steel piping with stainless steel nozzles alternatively offset

SIMPLEX BIG *DGT*

Model	STD €	INOX €
Simplex Big 1200 LT	18.287,00	20.197,00
Simplex Big 1200 LT AP	21.546,00	23.456,00
Simplex Big 1200 HT	20.871,00	22.782,00
Simplex Big 1200 HT AP	24.130,00	26.040,00
Simplex Big 1400 LT	19.764,00	22.011,00
Simplex Big 1400 LT AP	23.022,00	25.269,00
Simplex Big 1400 HT	22.573,00	24.820,00
Simplex Big 1400 HT AP	25.831,00	28.078,00
Simplex Big 1800 LT	24.607,00	27.191,00
Simplex Big 1800 LT AP	29.663,00	32.247,00
Simplex Big 1800 HT	28.202,00	30.787,00
Simplex Big 1800 HT AP	33.259,00	35.843,00



Simplex Big 1200 **LT**

Available accessories	1200	1400 €	1800 €	
Overturning door by pneumatic pistons		5.000,00	7.000,00	ACSB014
Combustion chamber of Stainless Steel with burner "Riello" gas-oil or methane		2.320,00	2.320,00	ACSB003
Additional outer carriage (besides the first)		1.420,00	2.343,00	ACSB011
Additional wire-netting platform besides the one included in the eqpt., zinc-plated		725,00	1.118,00	ACSB012
Additional wire-netting platform besides the one included in the eqpt., of stain.steel		1.290,00	2.184,00	ACSB013
Steam condenser (steam elimination of 80% at 80° C) *①		3.719,00	6.522,00	ACSB002
Disc oil separator by gear motor		688,00	688,00	ACSB001
Panels under the basket with filters to collect grease		570,00	570,00	ACSB004
Tank discharge pump		791,00	791,00	ACSB005
Equipped to be used with abrasive contaminants		330,00	330,00	ACSB006
Equipped to be used with strong caustic chemical products *②		770,00	770,00	ACSB007
Bleaching of the inside weldings ☀		835,00	950,00	ACSB010
Blowing with compressed air with independent pipings		1.749,00	1.749,00	ACSB008
Platform borders, removable, in stainless steel H200 mm		440,00	860,00	ACSB009

*① Not available with strong caustic chemical products

*② Only for **INOX** stainless steel version

Features and standard equipments

- ✓ Timed electrical exhaustion of the steams (patented system) ☀
- ✓ Sensitive barrier made of rubber on door closing ☀
- ✓ Outer carriage made of Aisi 304 stainless steel with drops collector and wheels with safety brake
- ✓ Pneumatic cylinder ISO with magnetic limit switch and safety pneumatical pilotage valve
- ✓ Stainless steel electropump
- ✓ Stainless steel filter on pump suction
- ✓ Safety level of the liquid of the tank and electrovalve for automatic water charging
- ✓ Gearmotor for basket rotation with couple limit device and centring sensor
- ✓ Electrical heating elements made of stainless or Incoloy or methane or gas-oil burner Mark "Riello"
- ✓ Digital electronic control and power system (**DGT**) ☀
- ✓ Structure and sheets made of stainless steel Aisi 304
- ✓ Triple gasket of the door in NBR (lower, upper and side)

AP

- ✓ High pressure pump

LT (for washing up to 60 °C)

- ✓ Zinc-plated rotating platform made of pressed grid with raised outer rim
- ✓ Zinc-plated and brass fittings with ogive
- ✓ Copper piping and brass nozzles alternatively offset

HT (for washing over 60 °C)

- ✓ Zinc-plated rotating platform make of pressed grid with raised outer rim
- ✓ Total thermal insulation in polyurethane with stainless steel panels that can be disassembled
- ✓ Zinc-plated and brass fittings with ogive
- ✓ Copper piping and brass nozzles alternatively offset

LT (for washing up to 60 °C) INOX

- ✓ Stainless steel rotating platform make of pressed grid with raised outer rim
- ✓ Stainless steel fittings
- ✓ Stainless steel inside basket-holder rays
- ✓ Stainless steel piping with stainless steel nozzles alternatively offset

HT (for washing over 60 °C) INOX

- ✓ Stainless steel rotating platform make of pressed grid with raised outer rim
- ✓ Total thermal insulation in polyurethane with stainless steel panels that can be disassembled
- ✓ Stainless steel fittings
- ✓ Stainless steel inside basket-holder rays
- ✓ Stainless steel piping with stainless steel nozzles alternatively offset

EVAPO *DGT*

Model	INOX €
Evapo 80 HT	10.867,00
Evapo 80 HT AP	12.575,00
Evapo 100 HT	13.727,00
Evapo 100 HT AP	15.672,00
Evapo 120 HT	16.854,00
Evapo 120 HT AP	19.123,00

Evapo 100 HT



Available accessories	PRICE €	
Outer carriage *①	1.854,00	ACE001
Additional outer carriage (besides the first)	1.450,00	ACE005
Additional basket for outer carriage (besides the first)	850,00	ACE006
Teflon and Viton gaskets (tub border excluded)	218,00	ACE002
Equipped to be used with abrasive contaminants	286,00	ACE003
Bleaching of the inside weldings ☀	550,00	ACE007
Blowing with compressed air and independent pipings	1.458,00	ACE004

*① Washing height reduced of mm. 120

Features and standard equipments

HT (for washing over 60 °C) INOX

- ✓ Timed electrical exhaustion of the steams and steam condenser (patented system) ☀
- ✓ Stainless steel basket with outer rim in electrowelded wire
- ✓ Stainless steel front click closing
- ✓ Total thermal insulation of polyurethane with panels made of stainless steel that can be dismantled
- ✓ Disc oil separator
- ✓ Stainless steel electropump with Viton seals
- ✓ Stainless steel filter on pump suction
- ✓ Special mesh cloth filter for sludge recovery
- ✓ Safety limit switch with blockage of the cover opening during the cycle
- ✓ Gasket on cover made of NBR
- ✓ Safety level of the liquid of the tank and electrovalve for automatic water charging
- ✓ Gearmotor for basket rotation with stainless steel shaft
- ✓ Stainless steel fittings and stainless steel piping with stainless steel nozzles alternatively offset
- ✓ Electrical heating by means of stainless steel/incoloy heating element
- ✓ Mechanical rotation of the basket
- ✓ Digital electronic control and power system (DGT) ☀
- ✓ Structure and sheets made of stainless steel Aisi 304

AP

- ✓ High pressure pump

DEVAP

Model	INOX €
Devap 200	6.890,00
Devap 400	10.161,00

Features and standard equipments

- ✓ Timed electrical exhaustion of the steams and steam condenser
- ✓ Stainless steel front click closing
- ✓ Total thermal insulation of polyurethane with panels made of stainless steel that can be dismantled
- ✓ Special mesh cloth filter for sludge recovery
- ✓ Safety limit switch with blockage of the cover opening during the cycle
- ✓ Gasket on cover made of NBR
- ✓ Safety level of the liquid of the tank and electrovalve for automatic water charging
- ✓ Electrical heating by means of stainless steel/incoloy heating element
- ✓ Structure and sheets made of stainless steel Aisi 304



EVAPO BIG **DGT**

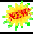
Model	STD €	INOX €
Evapo Big 1200 HT	30.459,00	32.369,00
Evapo Big 1200 HT AP	33.718,00	35.628,00
Evapo Big 1400 HT	34.540,00	36.787,00
Evapo Big 1400 HT AP	37.799,00	40.046,00
Evapo Big 1800 HT	47.011,00	49.595,00
Evapo Big 1800 HT AP	52.067,00	54.651,00

Evapo BIG 1400 HT






Basket made of **pressed grid**, with raised rim to contain parts.
More **stable! Stronger!**



Available accessories	1200	1400 €	1800 €	
Equipped to be used with abrasive contaminants		330,00	330,00	ACE001
Blowing with compressed air and independent pipings		1.749,00	1.749,00	ACE002
Additional outer carriage (besides the first)		1.420,00	2.343,00	ACE004
Additional wire-netting platform besides the one included in the eqpt., zinc-plated		725,00	1.118,00	ACE005
Additional wire-netting platform besides the one included in the eqpt., of stain.steel		1.290,00	2.184,00	ACE006
Bleaching of the inside weldings 		835,00	950,00	ACE007
Platform borders, removable, in stainless steel H200 mm		440,00	660,00	ACE003

Features and standard equipments

- ✓ Timed electrical exhaustion of the steams and steam condenser (patented system) 
- ✓ Sensitive barrier made of rubber on door closing 
- ✓ Outer carriage made of AISI 304 stainless steel with drops collector and wheels with safety brake *⊙
- ✓ Pneumatic cylinders ISO with magnetic limit switch and safety pneumatic pilotage valves
- ✓ Disc oil separator
- ✓ Stainless steel electropump with Viton seals
- ✓ Stainless steel filter on pump suction
- ✓ Special mesh cloth filter for sludge recovery
- ✓ Safety level of the liquid of the tank and electrovalve for automatic water charging
- ✓ Gearmotor for basket rotation with couple limit device and centring sensor
- ✓ Outer drops collector with drain tap
- ✓ Electrical heating elements made of stainless/Incoloy or methane or gas-oil burner Mark "Riello"
- ✓ Digital electronic control and power system (DGT) 
- ✓ Structure and sheets made of stainless steel Aisi 304
- ✓ Triple gasket of the door in NBR (lower, upper and side)

AP

- ✓ High pressure pump

HT (for washing over 60 °C)

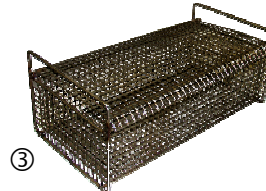
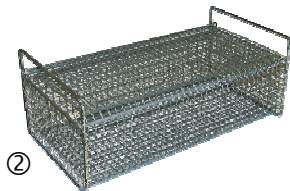
- ✓ Zinc-plated rotating platform make of pressed grid with raised outer rim
- ✓ Total thermal insulation in polyurethane with stainless steel panels that can be disassembled
- ✓ Zinc-plated and brass fittings with ogive
- ✓ Copper piping and brass nozzles alternatively offset

HT (for washing over 60 °C) INOX

- ✓ Stainless steel rotating platform make of pressed grid with raised outer rim
- ✓ Total thermal insulation in polyurethane with stainless steel panels that can be disassembled
- ✓ Stainless steel fittings
- ✓ Stainless steel inside basket-holder rays
- ✓ Stainless steel piping with stainless steel nozzles alternatively offset

DIFFERENT ACCESSORIES

Model	PRICE €
Round basket for small parts in stainless steel - Ø 180 x H 100 mm - net 6x8 ①	27,00
Rectangular basket for small parts zinc-plated with cover - 480 x 240 x H 140 mm - net 10x10 ②	143,00
Rectangular basket for small parts in stainless steel with cover - 480 x 240 x H 140 mm - net 10x10 ③	200,00



DISOIL

Model	STD €	INOX €	PACKING €
DISOIL M	3.044,00	not available	13,00
DISOIL T	3.290,00	4.399,00	13,00
DISOIL P	4.088,00	not available	13,00

The cost of packing has to be intended net.

Available accessories	PRICE €
Total thermal insulation in stainless steel	484,00 ACD001
Equipped to be used with abrasive contaminants	209,00 ACD002
SBR Rubber piping for connection to the suction floats, included clamps	1,00/mt ACD003



DISOIL T

Features and standard equipments

- ✓ System of floatings for liquid suction, to be installed in the tank (installation excluded)
- ✓ Structure and sheets in Aisi 304 stainless steel

M - T (electric one-phase or three-phase)

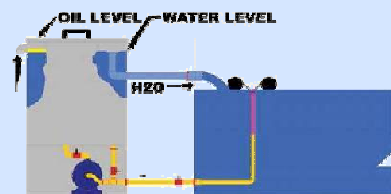
- ✓ Electrical self-priming pump to recover the liquid where oil has been extracted from

T (electric three-phase) INOX

- ✓ Electrical pump, fittings and regulation valves completely in stainless steel

P (pneumatic)

- ✓ Pneumatic diaphragm pump in acetal and Teflon to recover the liquid where oil has to be extracted from



DETERGENTS

Detergent	Description	PACKING	PRICE €
SAX	Degreasing powder, for all metals, lightly passivating action. Concentration: from 3% to 5% Temperatures: from 60 °C to 90 °C	Bag 25Kg ①	105,00
SAX AL	Degreasing powder, softer action than SAX, specially suitable for aluminium. Concentration: from 1% to 3% Temperatures: from 40 °C to 60 °C	Bag 25Kg ①	171,00
NEW 105	Degreasing liquid, leave minimum trails on the parts. For all metals. Concentration: from 1% to 3% for aluminium, from 3 to 5% for steel. Temperatures: from 60 °C to 90 °C	Can 30Kg ②	204,90
FOREL-L	Degreasing liquid, deoxidizing, alkaline descaling, paint removing. Indicated only for iron and cast iron. Strongly caustic. Necessary stainless steel version. Concentration: from 5% to 10% Temperatures: from 50 °C to 80 °C	Can 35Kg ②	198,10
MX	Degreasing liquid (oil derivated) non toxic. Use not diluted to degrease all metals. Odourless, without: phenols, benzol, chlorinated solvents. For cold wash only	Can 30Kg ③	294,00

SME markets dozens of detergents able to solve **specific** washing problems. Do not hesitate to contact us for a **free advice**

Suggested detergent guide

Sector	Use	Product	Dose	Time	Temperature
Car repairs	Car and truck repairing	SAX	3% - 5%	15 - 30 min.	70-80 °C
Car repairs	Printing machine repairing	SAX	3% - 5%	15 - 30 min.	70-80 °C
Car repairs	Bike repairing	SAX AL	3% - 5%	05 - 15 min.	50-60 °C
Car repairs	Motorbike repairing	SAX AL	3% - 5%	15 - 30 min.	50-60 °C
Car repairs	Earth moving machinery repairing	SAX	3% - 5%	15 - 30 min.	70-80 °C
Car repairs	Tractors repairing	SAX	3% - 5%	15 - 30 min.	70-80 °C
Carburettors	Washing of carburettors (degreasing only)	SAX AL	3% - 5%	10 - 15 min.	30-60 °C
Body shop	Washing of guns and cans (Mod. ECO)	THINNER	Pure 100%	05 - 10 min.	Cold wash
Electrical repair shops for cars	Washing of mechanical components	SAX, SAX AL	2% - 3%	15 - 30 min.	50-60 °C
Tools	Tools reparation and sharpening	NEW 105	3% - 5%	10 - 15 min.	Max 60 °C
Tools	Tools maintenance	NEW 105	3% - 5%	10 - 15 min.	Max 60 °C
Tools	Wood equipments	NEW 105	3% - 5%	30 - 60 min.	60-80 °C
Paint	Paint stripping of iron and cast material	FOREL L	5% - 10%	30 - 60 min.	80-90 °C

Examples of washing quality guaranteed from our washing installations

